

OHIO

2010



Induced Abortions in Ohio

Ohio Department of Health

John Kasich, Governor

Theodore E. Wymyslo, M.D., Director of Health

An equal opportunity employer/provider

Induced Abortions in Ohio, 2010

Prepared by:

**Center for Public Health Statistics and Informatics
Office of Performance Improvement**

**John Paulson
Health Services Policy Supervisor**

**Donna L. Smith
Researcher**

September, 2011

Induced Abortion Program contact Persons

Center for Public Health Statistics and Informatics

Data Analysis

John Paulson

614-644-8507

Donna L. Smith

614-466-7545

Quality Assurance

Fetal Development

Resources Directory on request

Hanh Le

614-644-7726

Office of General Counsel

Legislation

Rachel Belenker

614-466-4882

TABLE OF CONTENTS

	<i>Induced Abortion Summary</i>	<i>1</i>
Figure 1	Resident Induced Abortions Ohio, 1976-2010	3
Figure 2	Selected characteristics of resident induced abortions in Ohio, 2010	5
Figure 3	Induced abortions reported in Ohio, by county of occurrence, 2010	7
Figure 4	Abortion ratio and abortion rate, by year, Ohio residents 1990-2010	9
Figure 5	Induced abortion rates per 1,000 women by age, Ohio residents, 2003-2010	11
Figure 6	Induced abortion ratio, by age group, Ohio residents, 2003 - 2010	13
Figure 7	Total Induced abortions by weeks of gestation, by year, 1990-2010	15
Table 1	Induced Abortion Summary Tables, Ohio, 2010	17
Table 2	Selected characteristics of induced abortions reported in Ohio, 1998-2010	18
Table 3	Resident induced abortions reported in Ohio, by county of residence, 1997-2010	20
Table 4	Resident induced abortions reported in Ohio, by county of residence and age, 2010	22
Table 5a	Resident induced abortions reported in Ohio, by selected counties, race, and broad age groups, 2010	24
Table 5b	Resident induced abortions reported in Ohio, by selected counties, race and age, 2010	28
Table 6	Induced abortions reported in Ohio, by county of occurrence, 1997-2010	30

Table 7	Induced abortions reported in Ohio, by method of termination and county of occurrence, 2010	31
Table 8	Total induced abortions reported in Ohio, by gestational age, 2010	32
Table 9	Resident induced abortions reported in Ohio, by age of women obtaining abortion and by number of prior induced abortions, 2010	33
Table 10a	Total induced abortions in Ohio with post abortion complications, by type of complication, 2010 (Data Source is ‘Confidential Abortion Reporting Form’)	34
Table 10b	Total induced abortions in Ohio with post abortion complications, by type of complication, 2010 (Data Source is ‘Post-Abortion Care Report for Complications’)	35
Table 11	Total induced abortions in Ohio with post-abortion complications, by type of complication and gestation period, 2010 (Data Source is Post-Abortion Care Report for Complications)	36
Table 12	Resident Induced Abortions by Zip Code of Patient, Ohio, 2010	37
Appendix I	Confidential Abortion Report form	44
Appendix II	Post-Abortion Care Report for Complications form	46

Induced Abortion Summary

Background

Induced abortions must be reported to the Ohio Department of Health by the physician who performed the abortion, using the form “Confidential Abortion Reports.” The report includes demographic and medical history information about the woman obtaining the abortion and information about the medical procedure. These reports are used to produce statistical reports about abortions occurring in Ohio. The forms are confidential: no identifying information about women who obtain abortions is collected except the medical record number. Physicians providing post abortion care for complications are required to file a “Post Abortion Care Report for Complications.” It is not possible to link these post-abortion reports to the “Confidential Abortion Reports.” Both types of reports contain information about complications and are used to create statistical reports about post-abortion complications. This report presents information derived from both “Confidential Abortion Reports” and “Post-Abortion Care Reports for Complications” for 2010 in Ohio (reporting forms are included as Appendices I and II).

Characteristics of Induced Abortions Reported in Ohio, 2010

Induced abortion statistics are available for Ohio dating back to 1976. In 1994 the reporting form was improved. Many trend comparisons in this summary date back to 1996. We also compare the 2009 abortions to 2010 occurrences to show more recent trend developments.

A total of 28,123 induced pregnancy terminations were reported in Ohio for 2010, including 26,322 for Ohio residents (93.6%). The total number of abortions performed in Ohio has declined annually since 2000. (Figure 1)

Approximately one sixth of women who obtained abortions were under 20 years of age, with another third between the ages of 20-24 years of age (figure 2). The age distribution of women obtaining abortions has remained fairly unchanged since 1994. Approximately 87% of women who obtained an abortion were never married, divorced, or widowed. 13% of procedures were obtained by married or separated women. The marital status distribution has remained constant since 1994. Fifty-six percent of resident women who obtained abortions and for whom race was reported were White, 42% were African American, and 2% were other races. Three and one half percent of abortions were obtained by women of Hispanic origin.

The 2010 Ohio abortion rate was 11.5 per 1,000 women ages 15-44 years (figure 4). The most recent comparable rate for the US was higher at 16 per 1,000 women (year 2007). The 2010 Ohio abortion ratio was 190 abortions per 1,000 live births, up from 181 in 2009. That increase in ratio is a function of the number of live births declining over the year. Ohio’s abortion ratio is also lower than the 2007 US abortion ratio of 231 abortions per 1,000 live births.

In 2010, approximately 36% of women obtaining abortions in Ohio reported no prior pregnancies. Over half of all induced abortions involved pregnancies of less than 9 weeks (58%), with approximately 27% involving pregnancies of 9-12 weeks (figure 2). The proportion involving abortions of less than 9 weeks increased from 42% in 1995, while the proportion between 9 and 12 weeks declined from 40% to 27% (figure 7). There were 629 abortions involving pregnancies of 20 or more weeks, a number that decreased from 915 in 1997. The vast majority of reported abortions were obtained in six major metropolitan areas of Ohio

There were changes between 2002 and 2010 in method of termination for induced abortions performed in Ohio. Curettage remained the most frequent method of termination at 75% in 2010. That method has decreased since 2001, when 87% of terminations were by curettage. Medical/non-surgical procedures were the second most common method (20%).

Specific details about medical/non-surgical procedures have not been keyed from Ohio abortion reports, which makes it difficult to tabulate the specific procedures used in Ohio. We did, however, examine a sample of these reports in 2005 and the majority of these medical/surgical procedures were methotrexate and misoprostol administration. The medical procedures used most commonly in early abortions nationally are methotrexate with misoprostol and mifepristone with misoprostol (Goldberg AM, Greenberg MB, Darney PD. Drug therapy: miosprostol and pregnancy. N Engl J Med 2001;344:38-47). The FDA approved mifepristone for medical abortions in 2000. That approval was expected to shift many of the early abortions from surgical to non-surgical methods.

County of residence for women obtaining abortions is reported in tables 3, 4, 5a, and 5b. In accordance with Ohio Department of Health disclosure limitation policies, some counties were removed from tables 5a and 5b. The removed counties had fewer than 25 female residents in the reported age/race categories.

Ambulatory surgical facilities were the most common type of facility reporting that they provided abortion procedures in 2010. 28,037 procedures were obtained in 20 different ambulatory surgical facilities in 2010. Confidential Abortion Reports from 6 hospitals accounted for an additional 86 procedures.

Figure 1. Resident induced abortions, Ohio, 1976 – 2010

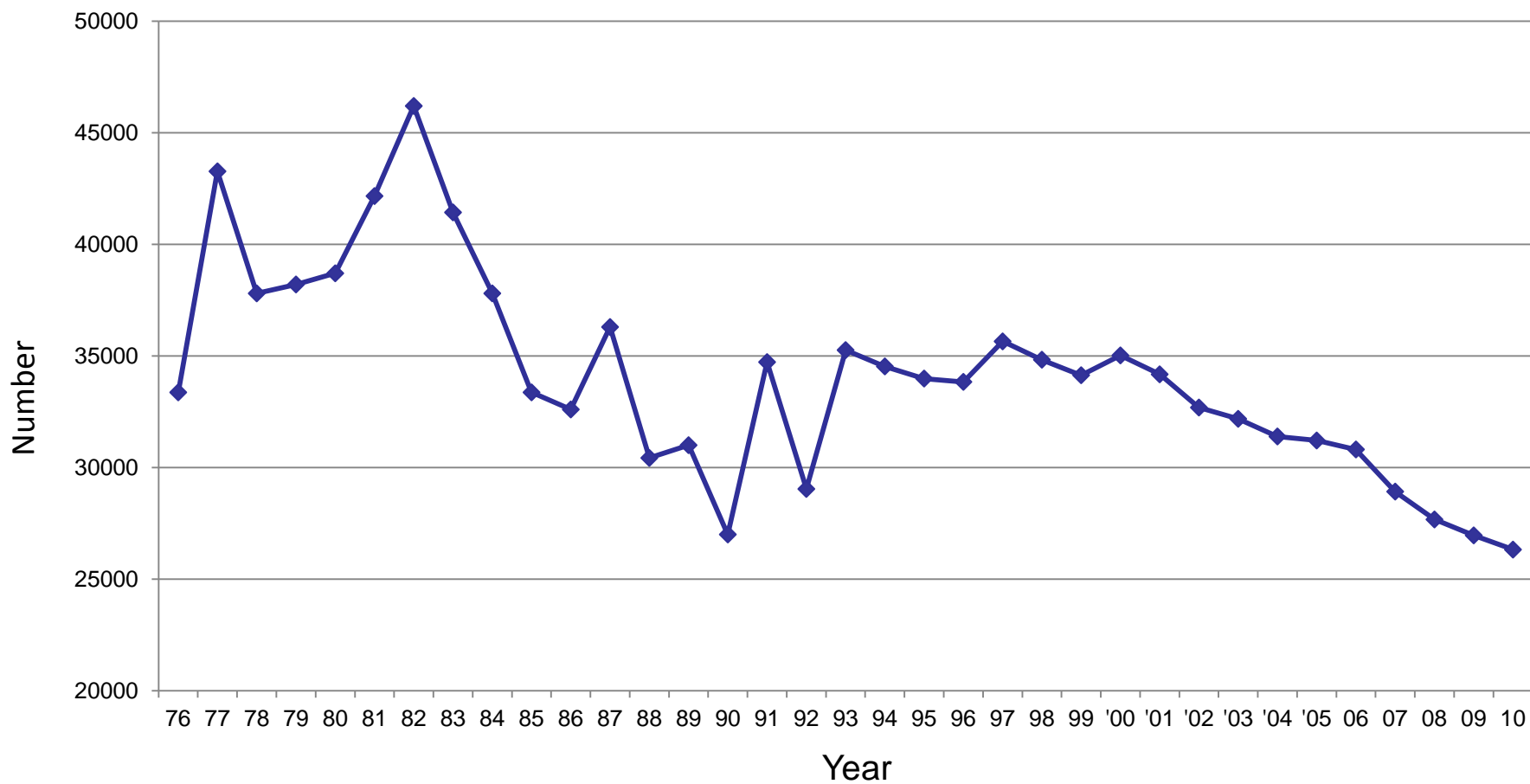
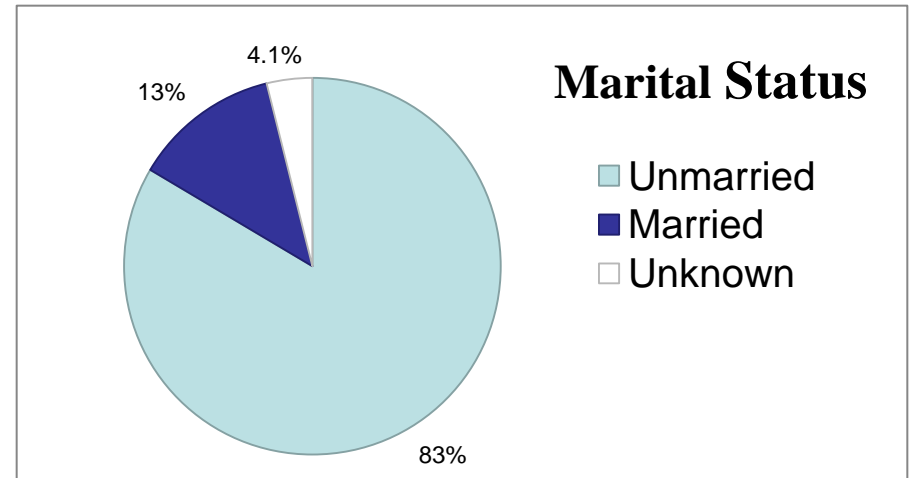
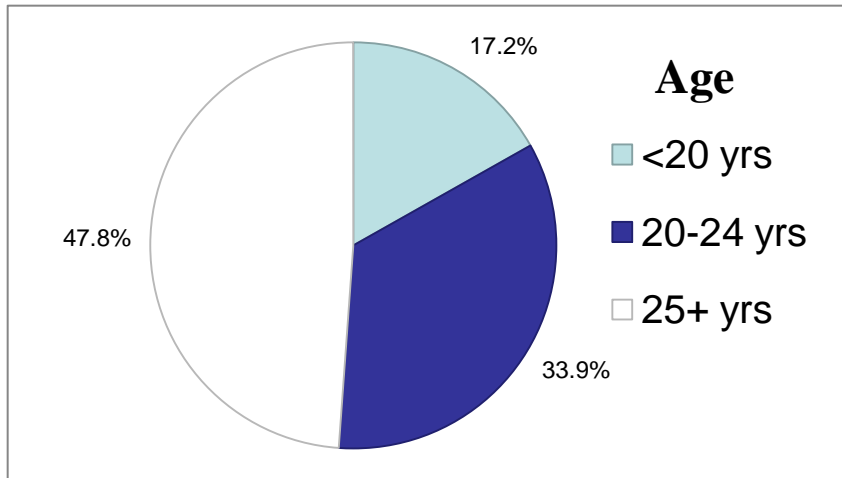
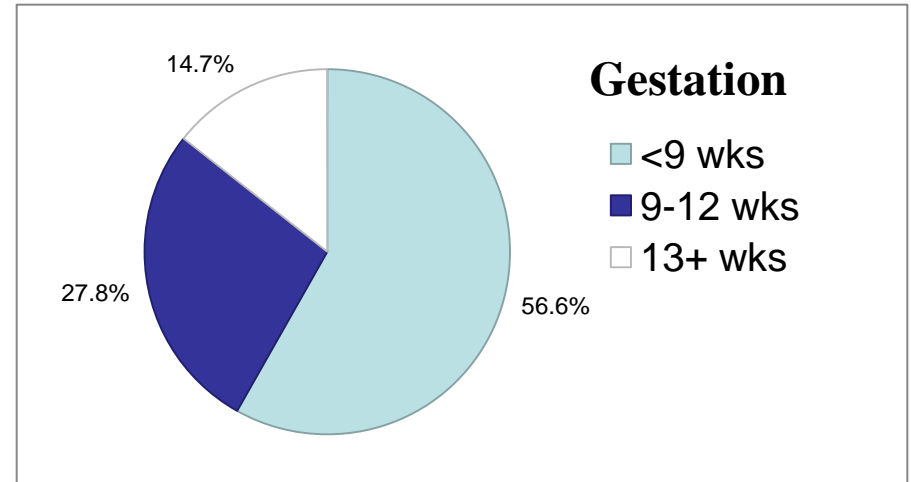
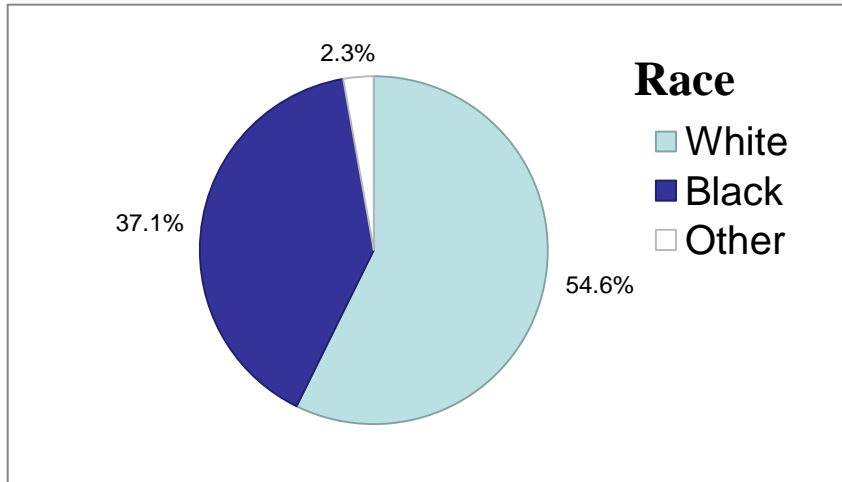


Figure 2. Selected characteristics of resident induced abortions in Ohio, 2010



Excludes Unknown unless otherwise stated

Figure 3. Induced abortions reported in Ohio, by county of occurrence, 2010

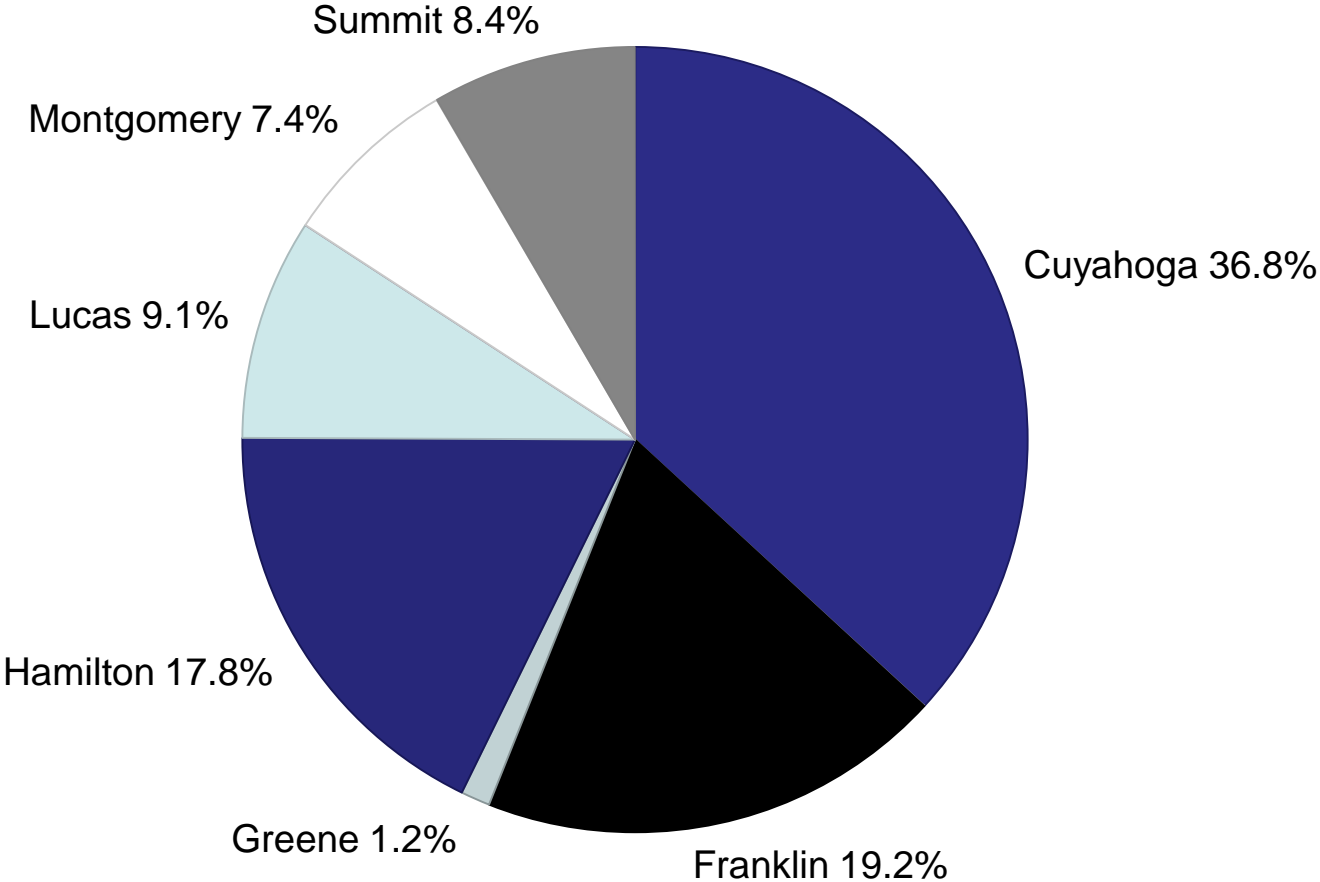
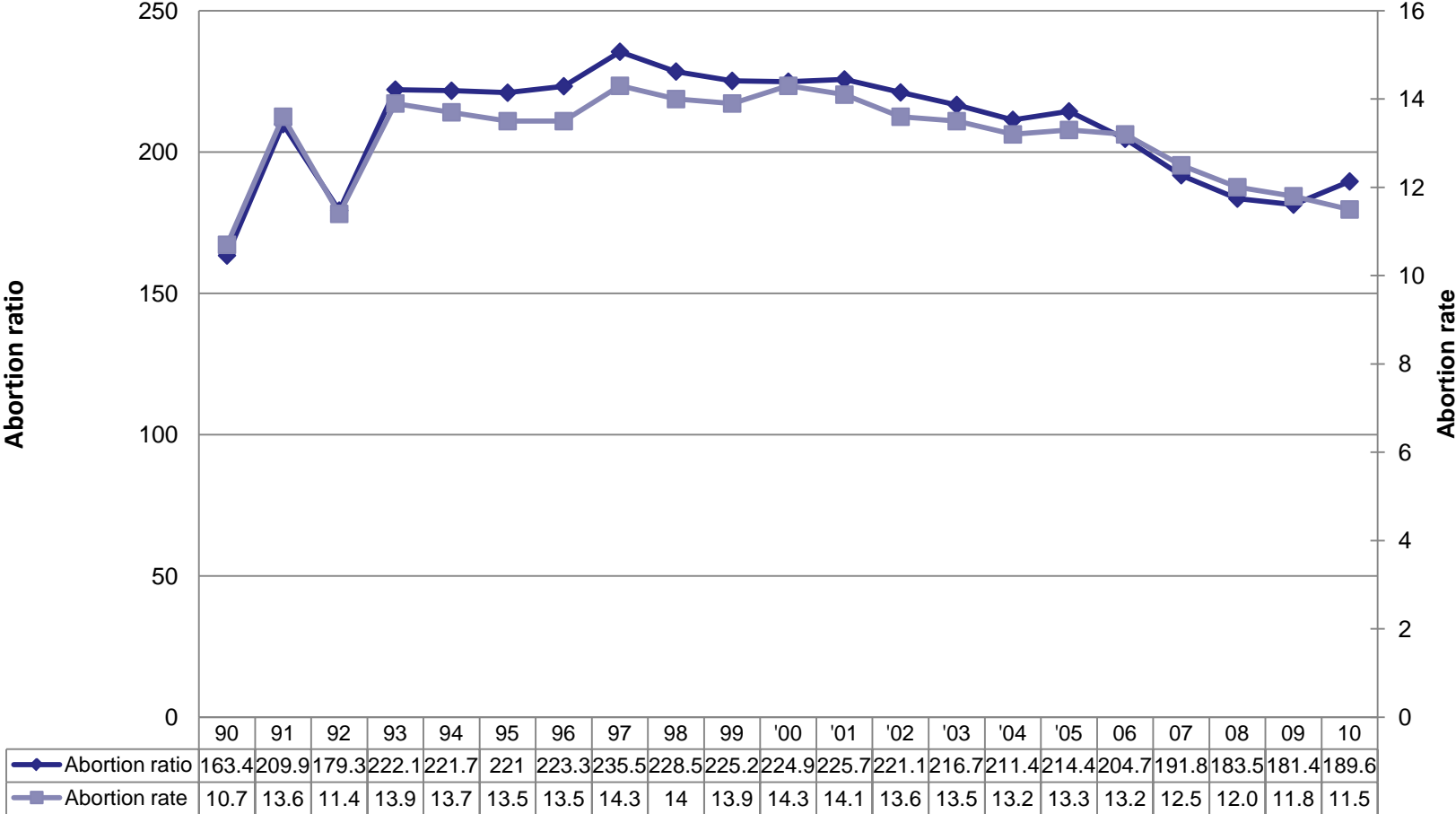
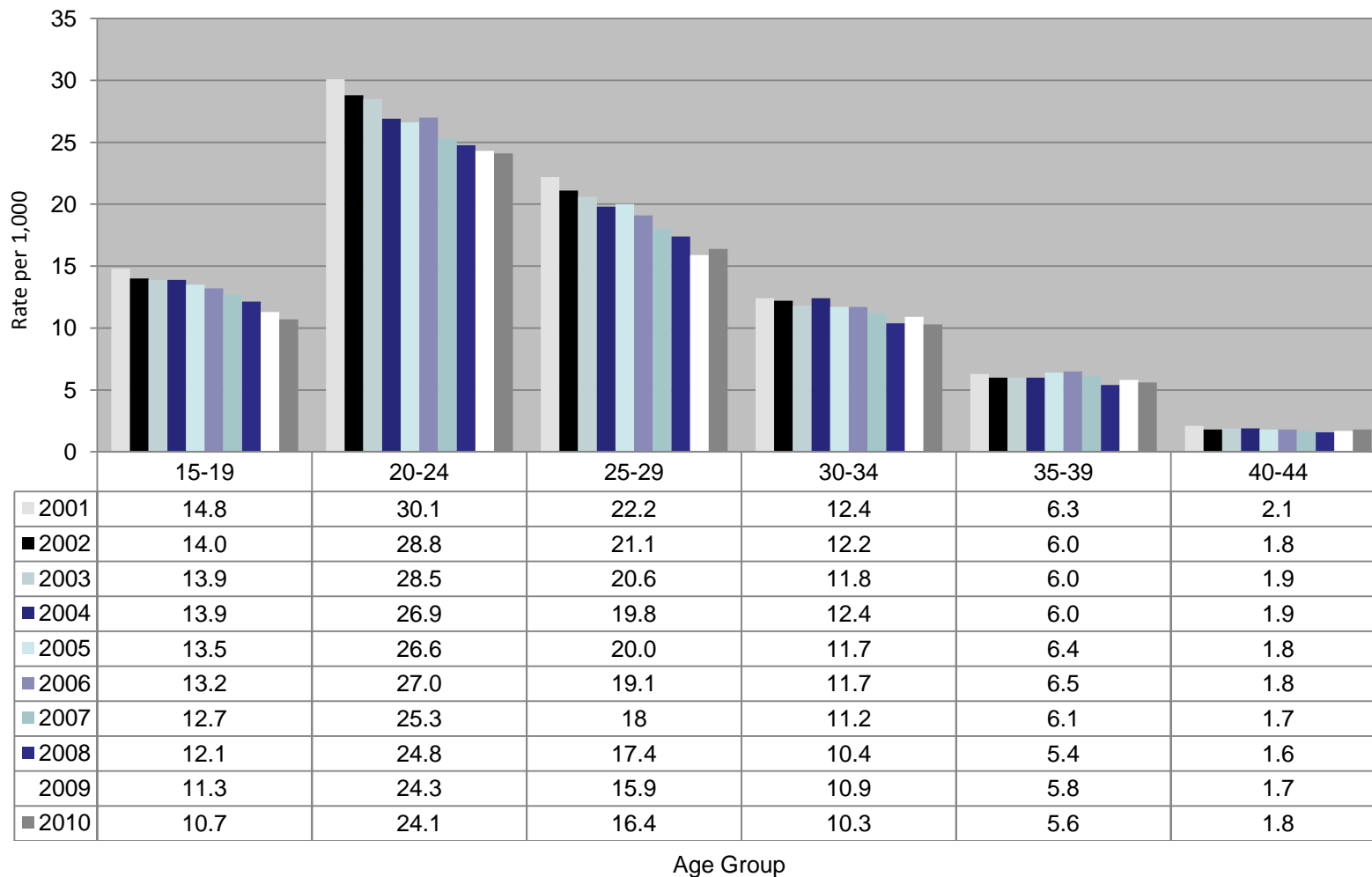


Figure 4. Abortion ratio and abortion rate, by year, Ohio residents, 1990 - 2010



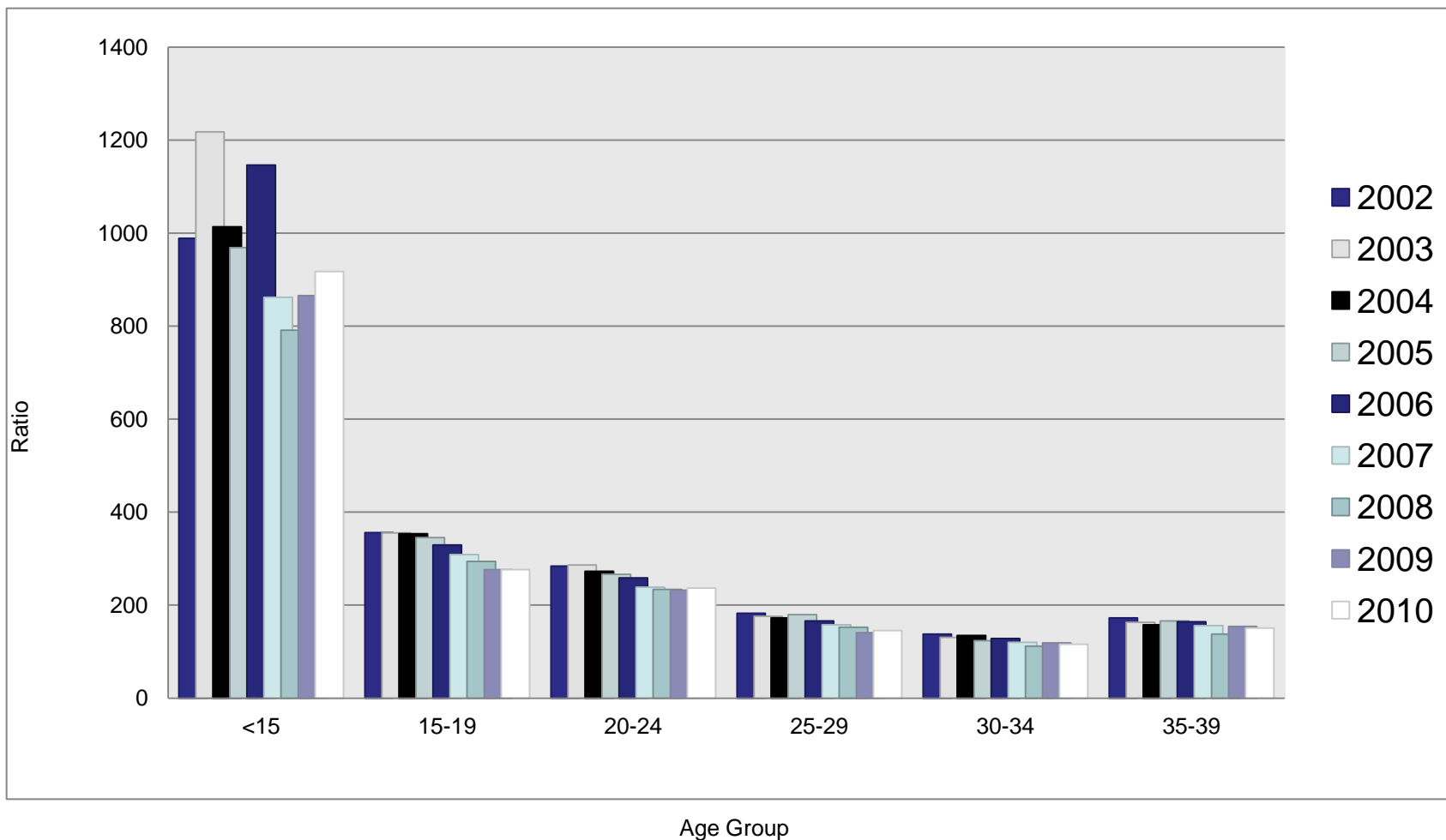
Abortion ratio is number of abortions per 1,000 live births.
 Abortion rate is number of abortions per 1,000 women ages 15-44.

Figure 5. Induced abortion rates per 1,000 women by age, Ohio residents, 2003 - 2010



Abortion rate is number of abortions per 1,000 female population in specified age group.

Figure 6. Induced abortion ratio, by age group, Ohio residents, 2002 - 2010



Abortion ratio is number of abortions per 1,000 live births in specified age group

Figure 7. Total Induced abortions by weeks of gestation, by year, 1990-2010

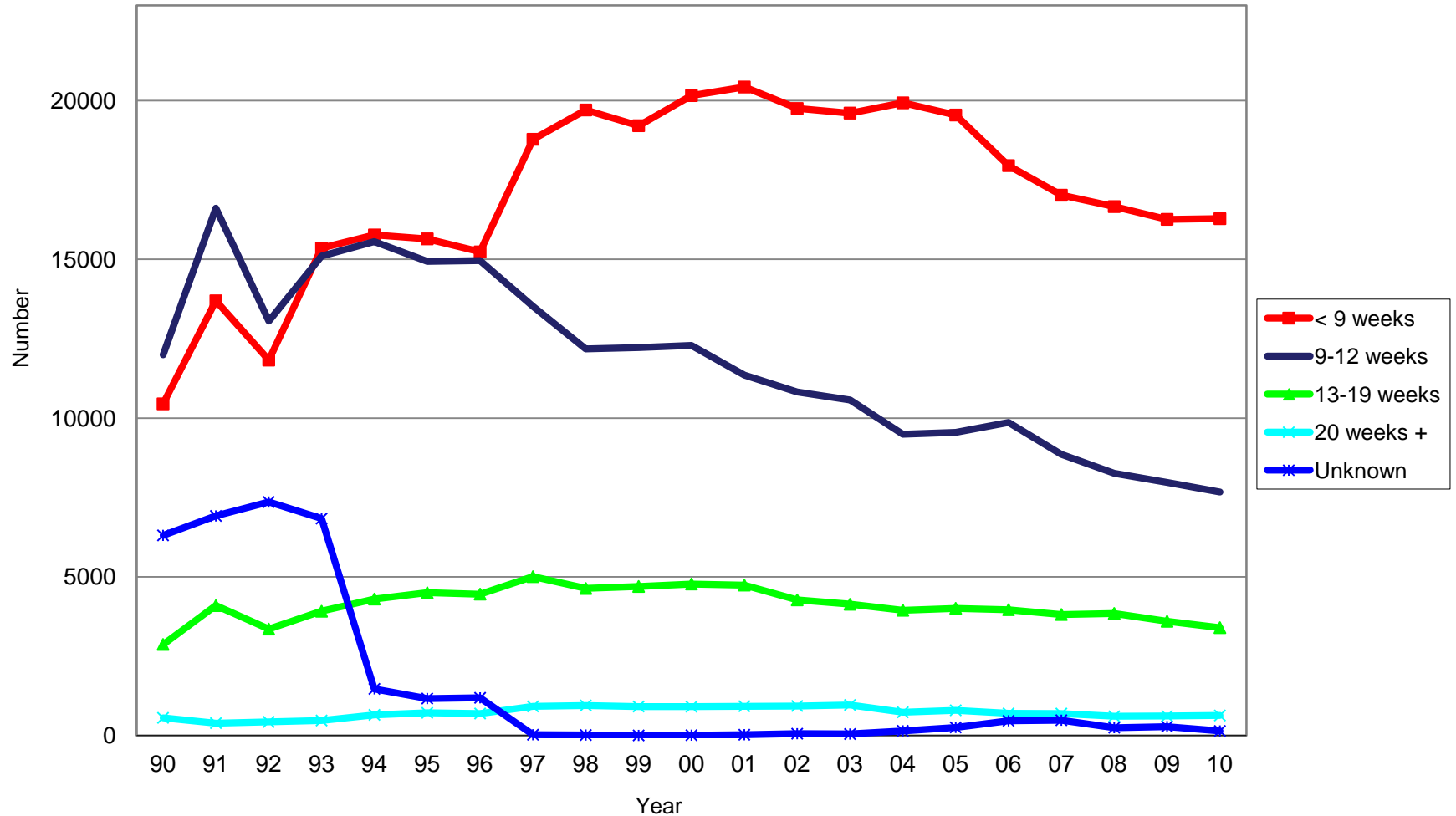


TABLE 1

INDUCED ABORTION SUMMARY TABLE, OHIO, 2010

CHARACTERISTICS	NUMBER	PERCENT
TOTAL INDUCED ABORTIONS	28123	100.0
RESIDENCE:		
Ohio Resident	26322	93.6
Out-of-State Resident	1801	6.4
AGE:		
Under 20 Years	4691	16.7
20-24 Years	9562	34.0
25 Years and Over	13612	48.4
Age Not Reported	258	0.9
RACE GROUP:		
White	15127	53.8
Black	10528	37.4
American Indian	89	0.3
Asian/Pacific Islander	654	2.3
Other/Unknown	1725	6.1
HISPANIC:		
Non-Hispanic	26890	95.6
Hispanic	1012	3.6
Unknown	221	0.8
LEVEL OF EDUCATION:		
Less than Grade 9	445	1.6
Grade 9-12	17276	61.4
1-2 Yrs College	5241	18.6
3-4 Yrs College	3887	13.8
5+ Yrs College	729	2.6
Unknown	545	1.9
MARITAL STATUS:		
Married <u>1/</u>	3529	12.5
Unmarried <u>2/</u>	23493	83.5
Not Reported	1101	3.9
NUMBER OF LIVING CHILDREN:		
None	9598	34.1
One	7579	26.9
Two or More	9708	34.5
Not Reported	1238	4.4
WEEKS OF GESTATION:		
Less than 9 Weeks	16283	57.9
9-12 Weeks	7672	27.3
13 Weeks and Over	4026	14.3
Not Reported	142	0.5

1/ Includes Separated2/ Includes Never Married, Divorced, Widowed

TABLE 2

SELECTED CHARACTERISTICS OF INDUCED ABORTIONS REPORTED IN OHIO, 1998-2010

Characteristic	2010	2009	2008	2007	2006	2005	2004	2003	2002	2001	2000	1999	1998
<u>NUMBER OF ABORTIONS</u>													
TOTAL INDUCED ABORTIONS	28123	28721	29613	30859	32936	34128	34242	35319	35830	37464	38140	37041	37479
RESIDENCE:													
Ohio Resident	26322	26959	27672	28921	30809	31210	31391	32180	32687	34174	35022	34134	34829
Out-of-State Resident	1801	1762	1941	1938	2127	2918	2851	3139	3143	3290	3118	2907	2606
Unknown	0	0	0	0	0	0	0	0	0	0	0	0	44
AGE:													
Under 15 Years	182	190	188	207	292	240	253	292	277	286	314	279	334
15-19 Years	4509	4743	5144	5376	5603	5817	5911	6014	6098	6485	6860	6997	7395
20-24 Years	9562	9739	9945	10182	11123	11502	11772	12441	12370	12710	13029	12391	12447
25-29 Years	6636	6547	7192	7355	7720	7968	7655	7836	7984	8531	8885	8774	8973
30-34 Years	3937	4021	3835	4081	4333	4687	4875	4980	5205	5299	5073	4797	4528
35-39 Years	2244	2389	2245	2535	2741	2708	2589	2660	2775	2956	2957	2857	2859
40-44 Years	752	716	723	755	845	874	910	938	906	1064	948	883	876
45 Years & Older	43	50	53	53	53	73	68	55	61	114	53	37	42
Unknown	258	326	288	315	226	259	209	103	154	19	21	26	25
EDUCATION:													
Less than Grade 9	445	533	479	579	662	653	675	756	755	797	612	493	632
Grade 9-12	17276	17830	18389	18880	20515	20911	21222	22359	22742	23834	24281	23287	23911
1 Or More College Years	9857	8956	10105	10719	11064	11810	11763	11924	11893	12593	12823	11919	11860
None/Not Reported	545	685	640	681	695	754	582	280	440	240	424	1342	1076
RACE:													
White	15127	15683	16019	17221	18724	19673	19952	20717	20934	22045	22581	22143	22366
Black	10528	10647	11064	11073	11683	12070	12028	12463	12689	13160	13480	12680	12155
Asian/Pacific Islander	654	610	600	693	695	723	731	731	740	775	782	720	661
Other/Unknown/Not Reported	1814	1781	1930	1872	1834	1662	1531	1418	1467	1484	1297	1498	2297
MARITAL STATUS:													
Never Married	21876	22078	22630	23157	24571	25595	25489	26263	26140	27276	27460	25944	25997
Married	2813	2990	3172	3621	3936	4199	4366	4737	4720	5058	5245	4928	4904
Separated	716	781	749	881	990	1080	1146	1148	1215	1381	1374	1334	1317
Divorced	1558	1630	1712	1826	2174	2296	2462	2663	2892	3104	3300	3350	3502
Widowed	59	71	66	88	72	72	88	89	100	110	126	101	114
Unknown	1101	1171	1284	1286	1193	886	691	419	763	535	635	1384	1645
NUMBER OF LIVING CHILDREN:													
No Children	9598	9890	10211	10974	11488	9415	9007	9913	10154	10866	11103	11480	11861
One Child	7578	7932	8210	8499	9040	9505	9535	9805	9970	10719	11006	10650	10726
Two or more Children	9709	9888	10093	10233	10899	11263	11515	11800	12179	12638	12679	12030	11546
Unknown	1238	1011	1099	1153	1519	3945	4185	3801	3527	3241	3352	2881	3346
WEEKS OF GESTATION:													
Less than 9 Weeks	16283	16264	16663	17023	17955	19549	19933	19610	19755	20432	20161	19212	19708
9 - 12 Weeks	7672	7971	8257	8855	9862	9547	9489	10570	10820	11350	12293	12221	12183
13 - 19 Weeks	3397	3597	3845	3811	3963	4006	3944	4133	4271	4738	4772	4695	4631
20 Weeks and Over	629	613	603	690	694	793	731	961	929	921	906	912	944
Unknown	142	276	245	480	462	253	145	45	55	23	8	1	13

Table 2. Induced Abortions, 1997-2009 (page 2)

Characteristic	2009	2008	2007	2006	2005	2004	2003	2002	2001	2000	1999	1998	
<u>PERCENTAGE DISTRIBUTION</u>													
TOTAL INDUCED ABORTIONS	100.0	100.0	100.0	100.0	100.0	100.0	100.0	100.0	100.0	100.0	100.0	100.0	
RESIDENCE:													
Ohio Resident	93.6	93.9	93.4	93.7	93.5	91.4	91.7	91.1	91.2	91.2	91.8	92.2	92.9
Out-of-State Resident	6.4	6.1	6.6	6.3	6.5	8.6	8.3	8.9	8.8	8.8	8.2	7.8	7.0
Unknown	0.0	0.0	0.0	0.0	0.0	0.0	0.0	0.0	0.0	0.0	0.0	0.0	0.1
AGE:													
Under 15 Years	0.6	0.7	0.6	0.7	0.9	0.7	0.7	0.8	0.8	0.8	0.8	0.8	0.9
15-19 Years	16.0	16.5	17.4	17.4	17.0	17.0	17.3	17.0	17.0	17.3	18.0	18.9	19.7
20-24 Years	34.0	33.9	33.6	33.0	33.8	33.7	34.4	35.2	34.5	33.9	34.2	33.5	33.2
25-29 Years	23.6	22.8	24.3	23.8	23.4	23.3	22.4	22.2	22.3	22.8	23.3	23.7	23.9
30-34 Years	14.0	14.0	13.0	13.2	13.2	13.7	14.2	14.1	14.5	14.1	13.3	13.0	12.1
35-39 Years	8.0	8.3	7.6	8.2	8.3	7.9	7.6	7.5	7.7	7.9	7.8	7.7	7.6
40-44 Years	2.7	2.5	2.4	2.4	2.6	2.6	2.7	2.7	2.5	2.8	2.5	2.4	2.3
45 Years & Older	0.2	0.2	0.2	0.2	0.2	0.2	0.2	0.2	0.2	0.3	0.1	0.1	0.1
Unknown	0.9	1.1	1.0	1.0	0.7	0.8	0.6	0.3	0.4	0.1	0.1	0.1	0.1
EDUCATION:													
Less than Grade 9	1.6	1.9	1.6	1.9	2.0	1.9	2.0	2.1	2.1	2.1	1.6	1.3	1.7
Grade 9-12	61.4	62.1	62.1	61.2	62.3	61.3	62.0	63.3	63.5	63.6	63.7	62.9	63.8
1 Or More College Years	35.0	31.2	34.1	34.7	33.6	34.6	34.4	33.8	33.2	33.6	33.6	32.2	31.6
None/Not Reported	1.9	2.4	2.2	2.2	2.1	2.2	1.7	0.8	1.2	0.6	1.1	3.6	2.9
RACE:													
White	53.8	54.6	54.1	55.8	56.8	57.6	58.3	58.7	58.4	58.8	59.2	59.8	59.7
Black	37.4	37.1	37.4	35.9	35.5	35.4	35.1	35.3	35.4	35.1	35.3	34.2	32.4
Asian/Pacific Islander	2.3	2.1	2.0	2.2	2.1	2.1	2.1	2.1	2.1	2.1	2.1	1.9	1.8
Other/Unknown/Not Reported	6.5	6.2	6.5	6.1	5.6	4.9	4.5	4.0	4.1	4.0	3.4	4.0	6.1
MARITAL STATUS:													
Never Married	77.8	76.9	76.4	75.0	74.6	75.0	74.4	74.4	73.0	72.8	72.0	70.0	69.4
Married	10.0	10.4	10.7	11.7	12.0	12.3	12.8	13.4	13.2	13.5	13.8	13.3	13.1
Separated	2.5	2.7	2.5	2.9	3.0	3.2	3.3	3.3	3.4	3.7	3.6	3.6	3.5
Divorced	5.5	5.7	5.8	5.9	6.6	6.7	7.2	7.5	8.1	8.3	8.7	9.0	9.3
Widowed	0.2	0.2	0.2	0.3	0.2	0.2	0.3	0.3	0.3	0.3	0.3	0.3	0.3
Unknown	3.9	4.1	4.3	4.2	3.6	2.6	2.0	1.2	2.1	1.4	1.7	3.7	4.4
NUMBER OF LIVING CHILDREN:													
No Children	34.1	34.4	34.5	35.6	34.9	27.6	26.3	28.1	28.3	29.0	29.1	31.0	31.6
One Child	26.9	27.6	27.7	27.5	27.4	27.9	27.8	27.8	27.8	28.6	28.9	28.8	28.6
Two or more Children	34.5	34.4	34.1	33.2	33.1	33.0	33.6	33.4	34.0	33.7	33.2	32.5	30.8
Unknown	4.4	3.5	3.7	3.7	4.6	11.6	12.2	10.8	9.8	8.7	8.8	7.8	8.9
WEEKS OF GESTATION:													
Less than 9 Weeks	57.9	56.6	56.3	55.2	54.5	57.3	58.2	55.5	55.1	54.5	52.9	51.9	52.6
9 - 12 Weeks	27.3	27.8	27.9	28.7	29.9	28.0	27.7	29.9	30.2	30.3	32.2	33.0	32.5
13 - 19 Weeks	12.1	12.5	13.0	12.3	12.0	11.7	11.5	11.7	11.9	12.6	12.5	12.7	12.4
20 Weeks and Over	2.2	2.1	2.0	2.2	2.1	2.3	2.1	2.7	2.6	2.5	2.4	2.5	2.5
Unknown	0.5	1.0	0.8	1.6	1.4	0.7	0.4	0.1	0.2	0.1	0.0	0.0	0.0

TABLE 3

RESIDENT INDUCED ABORTIONS REPORTED IN OHIO, BY COUNTY OF RESIDENCE, 1997-2010

Residence	2010	2009	2008	2007	2006	2005	2004	2003	2002	2001	2000	1999	1998	1997
OHIO	26322	26955	27672	28921	30809	31210	31391	32180	32687	34174	35022	34134	34829	35650
ADAMS	22	20	16	14	28	22	15	18	15	16	22	24	28	36
ALLEN	191	173	129	121	153	206	190	159	166	153	165	176	184	207
ASHLAND	47	53	45	52	48	61	57	64	47	67	69	74	70	57
ASHTABULA	175	200	149	185	208	187	216	214	228	228	222	195	233	264
ATHENS	109	112	101	112	100	111	123	121	119	113	131	163	149	196
AUGLAIZE	28	28	36	32	42	34	37	47	39	47	54	51	52	61
BELMONT	18	13	12	27	28	40	29	30	24	25	41	26	38	39
BROWN	37	36	42	48	41	55	44	46	67	63	71	75	71	71
BUTLER	690	707	754	720	775	816	843	771	773	796	769	854	859	901
CARROLL	23	34	32	35	25	23	34	32	35	38	40	36	35	33
CHAMPAIGN	44	45	49	48	57	55	63	52	45	58	74	61	72	70
CLARK	232	198	245	219	263	282	279	331	300	342	357	319	346	349
CLERMONT	258	293	321	289	293	317	326	326	344	385	395	429	405	408
CLINTON	40	63	62	48	46	49	45	60	74	76	74	75	62	65
COLUMBIANA	100	124	125	157	135	188	179	162	220	202	189	178	172	179
COSHOCTON	19	31	20	35	28	37	32	43	35	26	34	36	42	31
CRAWFORD	32	46	41	33	42	48	55	45	58	58	74	70	78	66
CUYAHOGA	6598	6794	7056	6986	7252	7412	7565	7889	8466	8644	8906	8790	8717	8732
DARKE	32	28	36	44	48	32	47	47	61	45	44	54	51	67
DEFIANCE	34	38	28	26	48	23	37	37	37	35	43	32	69	45
DELAWARE	144	140	135	174	188	207	171	169	142	130	178	117	149	149
ERIE	161	157	139	160	147	209	170	183	209	227	220	216	201	213
FAIRFIELD	163	157	155	205	184	208	204	184	185	179	184	193	186	194
FAYETTE	37	32	29	32	33	48	41	43	27	49	44	36	45	46
FRANKLIN	3448	3604	3526	4381	4683	4601	4678	4684	4290	4645	4764	4056	4143	4276
FULTON	35	28	41	39	42	49	41	36	43	52	48	75	62	56
GALLIA	6	16	5	17	18	9	17	12	15	15	19	19	18	24
GEAUGA	94	104	106	113	131	128	139	121	152	135	161	148	144	137
GREENE	267	290	274	306	320	282	314	311	322	306	379	321	411	390
GUERNSEY	45	23	42	58	46	27	49	46	61	44	59	66	56	77
HAMILTON	2785	2728	3125	2990	3112	2999	3172	3046	3374	3559	3578	3593	3701	3814
HANCOCK	76	90	105	86	125	129	120	115	121	109	118	126	134	133
HARDIN	20	32	23	29	28	32	47	35	28	36	29	40	51	36
HARRISON	10	10	7	14	6	9	6	9	13	10	15	12	18	20
HENRY	28	32	27	24	42	31	34	28	29	23	32	42	30	28
HIGHLAND	38	45	38	51	44	41	50	53	49	44	46	60	67	68
HOCKING	26	18	28	33	33	44	26	26	29	25	34	30	27	44
HOLMES	22	25	9	19	15	22	18	19	21	22	20	12	23	13
HURON	64	81	60	79	94	77	79	77	101	123	118	102	115	135
JACKSON	24	24	13	30	27	35	28	34	26	35	27	32	30	35
JEFFERSON	9	15	13	15	26	38	17	25	23	30	23	24	22	21
KNOX	59	54	45	72	77	55	66	64	67	65	65	54	70	64
LAKE	492	479	516	525	544	596	571	592	598	654	563	624	594	616
LAWRENCE	16	11	15	8	16	20	15	32	21	18	10	18	27	20

TABLE 3. Resident Induced Abortions, 1997-2010 (Page 2)

Residence	2010	2009	2008	2007	2006	2005	2004	2003	2002	2001	2000	1999	1998	1997
LICKING	203	201	186	252	238	250	259	257	258	259	269	268	242	292
LOGAN	38	51	45	42	64	48	50	55	59	60	78	78	86	76
LORAIN	695	679	699	726	692	760	812	841	746	910	878	837	932	880
LUCAS	1565	1565	1434	1356	1803	1633	1603	1566	1481	1558	1600	1673	1668	1781
MADISON	53	46	34	54	48	75	49	53	49	66	55	67	54	76
MAHONING	528	572	630	713	702	791	759	845	847	847	892	827	852	871
MARION	69	68	71	93	84	101	75	73	74	78	95	107	110	122
MEDINA	223	293	266	270	278	292	306	322	301	318	313	289	259	297
MEIGS	13	5	19	12	7	8	12	14	16	8	14	11	11	15
MERCER	27	24	19	18	31	31	36	17	44	43	46	41	37	28
MIAMI	120	113	122	119	146	139	163	158	142	158	175	170	199	199
MONROE	46	41	20	11	35	44	15	10	11	13	10	15	17	9
MONTGOMERY	1367	1394	1439	1420	1616	1531	1632	1709	1807	2072	2138	2158	2259	2366
MORGAN	10	10	5	7	6	7	4	10	12	9	17	13	12	8
MORROW	28	27	29	34	34	45	33	33	37	39	27	35	31	40
MUSKINGUM	85	102	75	100	99	112	127	122	79	105	118	126	167	142
NOBLE	8	6	2	11	9	2	5	6	5	8	11	13	8	9
OTTAWA	47	32	39	48	69	63	56	58	69	65	67	67	81	99
PAULDING	7	8	7	12	9	10	7	3	9	5	8	10	8	17
PERRY	33	21	22	32	44	40	34	35	32	41	41	43	54	52
PICKAWAY	50	67	52	76	72	46	71	64	52	57	62	66	84	76
PIKE	26	15	15	27	27	20	27	19	22	31	26	16	21	29
PORTAGE	354	367	379	360	374	414	429	467	422	447	430	447	441	453
PREBLE	33	32	53	46	56	45	38	44	52	56	64	69	81	70
PUTNAM	20	27	19	14	21	14	25	20	20	24	29	26	32	33
RICHLAND	156	170	194	177	188	217	184	196	216	212	231	209	227	242
ROSS	83	79	86	94	87	98	107	95	103	103	108	118	127	151
SANDUSKY	96	110	106	79	94	91	101	92	98	118	119	120	104	115
SCIOTO	47	61	57	60	65	68	74	85	61	66	81	62	50	73
SENECA	55	73	56	50	76	73	65	72	73	86	108	94	116	80
SHELBY	45	45	27	53	54	59	54	74	53	54	87	59	80	86
STARK	745	771	752	840	831	859	795	862	900	819	851	865	895	909
SUMMIT	1428	1469	1601	1660	1742	1798	1677	1889	1870	1882	1810	1840	1809	1821
TRUMBULL	370	382	445	501	504	536	493	595	633	628	683	559	557	600
TUSCARAWAS	109	97	132	121	115	156	135	170	139	153	130	158	157	135
UNION	58	49	52	59	55	52	59	63	55	66	68	53	55	48
VAN WERT	0	0	7	9	14	17	13	12	15	9	17	10	15	12
VINTON	5	12	8	8	11	13	11	14	14	17	14	8	12	20
WARREN	265	244	270	272	251	253	246	269	266	287	265	271	279	283
WASHINGTON	28	23	22	27	33	28	25	37	28	41	36	31	38	37
WAYNE	115	125	142	115	162	153	128	139	145	136	139	150	158	166
WILLIAMS	35	31	33	32	34	40	34	28	20	33	32	41	38	46
WOOD	222	203	204	207	267	255	254	232	238	211	250	255	280	270
WYANDOT	14	18	22	13	21	29	20	17	15	24	22	25	29	30

TABLE 4

RESIDENT INDUCED ABORTIONS REPORTED IN OHIO, BY COUNTY AND AGE, 2010

Residence	Total	Age Group												
		<15	15	16	17	18	19	20-24	25-29	30-34	35-39	40-44	45+	Unk.
OHIO TOTAL	26322	167	264	490	674	1233	1604	8963	6197	3678	2079	698	37	238
ADAMS	22	0	0	0	0	0	2	7	6	4	1	1	0	1
ALLEN	191	0	1	5	1	7	10	76	33	37	11	6	1	3
ASHLAND	47	1	1	1	3	3	1	15	12	6	2	2	0	0
ASHTABULA	175	3	4	6	8	8	5	66	33	18	16	4	1	3
ATHENS	109	1	1	1	0	4	7	54	19	14	6	1	0	1
AUGLAIZE	28	1	2	1	0	0	0	10	5	5	1	3	0	0
BELMONT	18	0	0	0	2	0	4	7	3	2	0	0	0	0
BROWN	37	0	0	0	2	3	2	10	5	7	7	0	0	1
BUTLER	690	6	7	13	20	33	44	231	148	103	66	12	1	6
CARROLL	23	0	0	0	1	2	0	9	8	2	1	0	0	0
CHAMPAIGN	44	1	1	0	1	2	3	19	9	4	3	0	0	1
CLARK	232	3	4	6	3	11	18	72	54	33	16	8	0	4
CLERMONT	258	1	2	7	6	12	10	96	55	47	15	5	0	2
CLINTON	40	0	1	0	1	4	7	12	7	5	2	1	0	0
COLUMBIANA	100	0	0	1	5	3	14	30	21	10	9	5	0	2
COSHOCTON	19	1	0	0	0	0	2	4	3	4	4	0	1	0
CRAWFORD	32	0	0	1	0	2	2	20	4	3	0	0	0	0
CUYAHOGA	6598	43	68	121	178	317	403	2129	1641	971	506	166	10	45
DARKE	32	0	0	1	1	2	1	9	10	4	4	0	0	0
DEFIANCE	34	0	0	1	0	1	1	13	8	6	1	3	0	0
DELAWARE	144	1	1	2	3	7	4	40	31	24	26	3	0	2
ERIE	161	2	2	4	4	8	11	56	35	24	13	1	1	0
FAIRFIELD	163	1	5	4	3	11	12	59	29	19	13	6	0	1
FAYETTE	37	1	0	1	1	2	3	13	11	3	2	0	0	0
FRANKLIN	3448	21	30	51	82	124	174	1266	875	469	240	83	1	32
FULTON	35	1	0	1	0	2	2	12	4	7	4	2	0	0
GALLIA	6	0	0	0	0	0	0	3	1	0	1	1	0	0
GEAUGA	94	1	1	0	2	4	6	25	22	17	8	7	0	1
GREENE	267	1	2	4	11	20	27	102	48	18	20	11	0	3
GUERNSEY	45	0	0	0	3	2	6	17	11	3	3	0	0	0
HAMILTON	2785	21	19	44	67	107	146	981	716	411	190	60	7	16
HANCOCK	76	0	1	1	0	1	7	28	14	12	8	4	0	0
HARDIN	20	0	0	0	1	2	1	7	5	2	0	2	0	0
HARRISON	10	0	0	0	0	0	0	3	3	2	0	1	0	1
HENRY	28	1	0	0	1	1	2	7	6	6	4	0	0	0
HIGHLAND	38	1	0	0	2	3	4	11	5	4	5	2	0	1
HOCKING	26	0	0	0	0	2	2	7	6	4	2	2	0	1
HOLMES	22	0	0	1	1	2	3	4	4	4	2	1	0	0
HURON	64	0	0	3	0	3	7	21	10	9	7	3	0	1
JACKSON	24	0	0	0	0	0	3	16	4	0	1	0	0	0
JEFFERSON	9	0	0	0	0	0	0	1	4	4	0	0	0	0
KNOX	59	0	0	1	1	0	4	22	16	5	8	2	0	0
LAKE	492	0	3	9	12	23	31	160	109	72	46	19	4	4
LAWRENCE	16	1	0	1	1	0	2	6	0	3	0	2	0	0

TABLE 4. RESIDENT INDUCED ABORTIONS REPORTED IN OHIO, BY COUNTY AND AGE, 2010 (Page 2)

Residence	Total	Age Group											Unk.	
		<15	15	16	17	18	19	20-24	25-29	30-34	35-39	40-44		45+
LICKING	203	1	0	7	2	14	17	66	44	18	17	11	0	6
LOGAN	38	0	0	2	1	1	4	15	8	3	3	1	0	0
LORAIN	695	4	11	17	21	41	41	193	161	111	69	14	0	12
LUCAS	1565	13	8	33	29	75	92	577	368	225	99	32	1	13
MADISON	53	2	0	3	2	1	9	13	11	6	6	0	0	0
MAHONING	528	6	4	7	10	29	38	177	120	75	42	13	0	7
MARION	69	1	0	1	1	6	5	31	8	9	4	2	0	1
MEDINA	223	0	3	4	10	12	16	65	48	22	30	10	0	3
MEIGS	13	0	0	1	0	1	0	4	2	3	1	1	0	0
MERCER	27	0	2	1	1	1	4	8	3	3	3	1	0	0
MIAMI	120	0	1	1	3	4	9	43	26	17	11	5	0	0
MONROE	46	0	1	2	0	2	4	14	10	5	6	2	0	0
MONTGOMERY	1367	6	12	25	27	55	78	483	341	187	113	30	2	8
MORGAN	10	0	0	1	1	1	0	3	1	1	1	1	0	0
MORROW	28	1	2	2	0	0	0	9	6	4	4	0	0	0
MUSKINGUM	85	0	1	1	0	4	5	34	18	8	5	7	0	2
NOBLE	8	1	0	0	1	1	1	3	0	1	0	0	0	0
OTTAWA	47	0	1	1	1	5	4	15	5	14	1	0	0	0
PAULDING	7	0	0	0	0	0	0	1	3	1	2	0	0	0
PERRY	33	1	1	5	0	0	1	11	6	6	1	0	1	0
PICKAWAY	50	0	0	1	2	4	4	17	11	5	6	0	0	0
PIKE	26	0	0	1	1	2	0	4	7	7	2	1	0	1
PORTAGE	354	0	4	6	14	15	25	136	83	30	29	7	0	5
PREBLE	33	1	0	2	1	0	1	9	10	4	4	0	0	1
PUTNAM	20	0	0	3	0	0	1	4	3	3	4	1	0	1
RICHLAND	156	0	1	4	9	6	11	57	31	18	15	4	0	0
ROSS	83	2	1	1	1	1	2	28	21	13	11	1	0	1
SANDUSKY	96	0	1	3	5	4	5	37	17	13	8	3	0	0
SCIOTO	47	0	1	0	3	1	3	19	12	4	3	0	0	1
SENECA	55	0	0	3	1	4	5	11	15	7	5	1	0	3
SHELBY	45	0	3	1	2	4	6	12	8	4	3	1	1	0
STARK	745	3	13	12	23	39	57	251	152	83	68	30	1	13
SUMMIT	1428	8	14	20	41	81	91	471	316	190	122	52	1	21
TRUMBULL	370	2	9	12	9	22	27	110	89	42	33	10	0	5
TUSCARAWAS	109	0	3	4	4	5	4	40	29	8	9	3	0	0
UNION	58	0	0	1	2	4	3	11	12	12	7	5	1	0
VAN WERT	0	0	0	0	0	0	0	0	0	0	0	0	0	0
VINTON	5	0	0	0	0	0	0	2	2	1	0	0	0	0
WARREN	265	0	2	3	6	13	13	70	50	58	34	14	2	0
WASHINGTON	28	0	1	1	1	4	3	9	5	3	1	0	0	0
WAYNE	115	0	2	1	9	14	4	34	27	14	7	3	0	0
WILLIAMS	35	0	1	3	1	0	1	18	3	6	1	0	0	1
WOOD	222	1	5	2	2	19	16	87	47	25	14	3	0	1
WYANDOT	14	0	0	0	0	0	1	5	5	2	1	0	0	0

TABLE 5a

RESIDENT INDUCED ABORTIONS REPORTED IN OHIO, BY SELECTED
COUNTIES, RACE AND BROAD AGE GROUPS, 2010

Residence/Race	Total	Age Group					Unk
		10-19	20-29	30-39	40-49	50 +	
OHIO	26322	4432	15160	5757	731	4	238
White	13711	2276	7762	3071	469	2	131
Black	10285	1820	6106	2083	186	2	88
Oth/Unk	2326	336	1292	603	76	0	19
ALLEN	191	24	109	48	7	0	3
White	129	14	73	35	5	0	2
Black	51	9	31	8	2	0	1
Oth/Unk	11	1	5	5	0	0	0
ASHTABULA	175	34	99	34	5	0	3
White	155	31	87	29	5	0	3
Black	8	1	5	2	0	0	0
Oth/Unk	12	2	7	3	0	0	0
ATHENS	109	14	73	20	1	0	1
White	84	10	55	17	1	0	1
Black	9	1	8	0	0	0	0
Oth/Unk	16	3	10	3	0	0	0
BUTLER	690	123	379	169	12	1	6
White	462	91	256	104	6	0	5
Black	160	21	93	39	5	1	1
Oth/Unk	68	11	30	26	1	0	0
CLARK	232	45	126	49	8	0	4
White	185	36	101	38	8	0	2
Black	36	8	23	4	0	0	1
Oth/Unk	11	1	2	7	0	0	1
CLERMONT	258	38	151	62	5	0	2
White	235	34	139	55	5	0	2
Black	11	2	6	3	0	0	0
Oth/Unk	12	2	6	4	0	0	0
COLUMBIANA	100	23	51	19	5	0	2
White	93	22	50	16	5	0	0
Black	4	0	1	3	0	0	0
Oth/Unk	3	1	0	0	0	0	2

TABLE 5a. RESIDENT INDUCATED ABORTIONS, 2010 (PAGE 2)

Residence/Race	Total	Age Group					Unk
		10-19	20-29	30-39	40-49	50 +	
CUYAHOGA	6598	1130	3770	1477	175	1	45
White	1833	286	1040	413	75	1	18
Black	4032	747	2304	890	72	0	19
Oth/Unk	733	97	426	174	28	0	8
DELAWARE	144	18	71	50	3	0	2
White	119	14	62	40	1	0	2
Black	10	4	3	2	1	0	0
Oth/Unk	15	0	6	8	1	0	0
ERIE	161	31	91	37	2	0	0
White	108	20	63	23	2	0	0
Black	36	9	18	9	0	0	0
Oth/Unk	17	2	10	5	0	0	0
FAIRFIELD	163	36	88	32	6	0	1
White	137	29	78	26	3	0	1
Black	23	6	9	5	3	0	0
Oth/Unk	3	1	1	1	0	0	0
FRANKLIN	3448	482	2141	709	84	0	32
White	1639	209	1018	349	47	0	16
Black	1506	245	942	276	27	0	16
Oth/Unk	303	28	181	84	10	0	0
GREENE	267	65	150	38	11	0	3
White	176	45	96	29	5	0	1
Black	58	13	39	2	2	0	2
Oth/Unk	33	7	15	7	4	0	0
HAMILTON	2785	404	1697	601	67	0	16
White	957	137	585	201	30	0	4
Black	1601	238	989	329	35	0	10
Oth/Unk	227	29	123	71	2	0	2
HANCOCK	76	10	42	20	4	0	0
White	63	7	34	18	4	0	0
Black	5	1	4	0	0	0	0
Oth/Unk	8	2	4	2	0	0	0
JEFFERSON	9	0	5	4	0	0	0
White	6	0	4	2	0	0	0
Black	3	0	1	2	0	0	0
KNOX	59	6	38	13	2	0	0
White	56	5	37	12	2	0	0
Black	1	0	1	0	0	0	0
Oth/Unk	2	1	0	1	0	0	0
LAKE	492	78	269	118	22	1	4
White	368	58	202	84	19	1	4
Black	57	8	39	10	0	0	0
Oth/Unk	67	12	28	24	3	0	0

TABLE 5a. RESIDENT INDUCATED ABORTIONS, 2010 (PAGE 3)

Residence/Race	Total	Age Group					Unk
		10-19	20-29	30-39	40-49	50 +	
LICKING	203	41	110	35	11	0	6
White	173	38	94	25	11	0	5
Black	22	2	12	7	0	0	1
Oth/Unk	8	1	4	3	0	0	0
LORAIN	695	135	354	180	14	0	12
White	474	94	235	129	11	0	5
Black	124	22	67	29	2	0	4
Oth/Unk	97	19	52	22	1	0	3
LUCAS	1565	250	945	324	33	0	13
White	740	99	438	179	19	0	5
Black	651	126	395	113	10	0	7
Oth/Unk	174	25	112	32	4	0	1
MAHONING	528	94	297	117	13	0	7
White	281	41	161	71	7	0	1
Black	209	46	114	40	4	0	5
Oth/Unk	38	7	22	6	2	0	1
MARION	69	14	39	13	2	0	1
White	60	11	34	12	2	0	1
Black	8	3	5	0	0	0	0
Oth/Unk	1	0	0	1	0	0	0
MEDINA	223	45	113	52	10	0	3
White	202	39	101	49	10	0	3
Black	6	3	2	1	0	0	0
Oth/Unk	15	3	10	2	0	0	0
MIAMI	120	18	69	28	5	0	0
White	112	18	63	26	5	0	0
Black	5	0	5	0	0	0	0
Oth/Unk	3	0	1	2	0	0	0
MONTGOMERY	1367	203	824	300	31	1	8
White	642	93	382	144	19	0	4
Black	634	97	390	135	7	1	4
Oth/Unk	91	13	52	21	5	0	0
PORTAGE	354	64	219	59	7	0	5
White	258	46	151	50	7	0	4
Black	75	16	52	6	0	0	1
Oth/Unk	21	2	16	3	0	0	0

TABLE 5a. RESIDENT INDUCATED ABORTIONS, 2010 (PAGE 4)

Residence/Race	Total	Age Group					Unk
		10-19	20-29	30-39	40-49	50+	
RICHLAND	156	31	88	33	4	0	0
White	118	22	67	25	4	0	0
Black	34	7	19	8	0	0	0
Oth/Unk	4	2	2	0	0	0	0
SANDUSKY	96	18	54	21	3	0	0
White	77	15	40	20	2	0	0
Black	10	2	7	0	1	0	0
Oth/Unk	9	1	7	1	0	0	0
SCIOTO	47	8	31	7	0	0	1
White	36	6	23	6	0	0	1
Black	8	0	8	0	0	0	0
Oth/Unk	3	2	0	1	0	0	0
SENECA	55	13	26	12	1	0	3
White	48	11	21	12	1	0	3
Black	2	0	2	0	0	0	0
Oth/Unk	5	2	3	0	0	0	0
STARK	745	147	403	151	31	0	13
White	535	105	273	119	27	0	11
Black	169	28	112	25	2	0	2
Oth/Unk	41	14	18	7	2	0	0
SUMMIT	1428	255	787	312	53	0	21
White	804	129	442	183	39	0	11
Black	526	110	297	98	11	0	10
Oth/Unk	98	16	48	31	3	0	0
TRUMBULL	370	81	199	75	10	0	5
White	268	55	145	58	8	0	2
Black	85	21	45	14	2	0	3
Oth/Unk	17	5	9	3	0	0	0
WARREN	265	37	120	92	16	0	0
White	211	32	100	67	12	0	0
Black	19	4	10	5	0	0	0
Oth/Unk	35	1	10	20	4	0	0
WAYNE	115	30	61	21	3	0	0
White	97	27	50	17	3	0	0
Black	11	2	7	2	0	0	0
Oth/Unk	7	1	4	2	0	0	0
WOOD	222	45	134	39	3	0	1
White	187	40	108	35	3	0	1
Black	17	3	12	2	0	0	0
Oth/Unk	18	2	14	2	0	0	0

TABLE 5b

RESIDENT INDUCED ABORTIONS REPORTED IN OHIO, BY SELECTED COUNTIES, RACE AND AGE, 2010

County/Race	Total	Age Group															
		<15	15	16	17	18	19	15-19	20	21	20-24	25-29	30-34	35-39	40-44	45+	Unk.
OHIO	26322	167	264	490	674	1233	1604	4265	1801	1893	8963	6197	3678	2079	698	37	238
White	13711	64	125	256	333	665	833	2212	951	984	4644	3118	1880	1191	446	25	131
Black	10285	92	118	211	290	467	642	1728	729	742	3583	2523	1412	671	180	8	88
Oth/Unk	2326	11	21	23	51	101	129	325	121	167	736	556	386	217	72	4	19
BUTLER	690	6	7	13	20	33	44	117	52	52	231	148	103	66	12	1	6
White	462	4	4	8	16	25	34	87	34	39	155	101	64	40	6	0	5
Black	160	2	2	4	3	5	5	19	14	12	59	34	22	17	5	1	1
Oth/Unk	68	0	1	1	1	3	5	11	4	1	17	13	17	9	1	0	0
CUYAHOGA	6598	43	68	121	178	317	403	1087	441	423	2129	1641	971	506	166	10	45
White	1833	2	15	25	41	92	111	284	117	110	601	439	254	159	71	5	18
Black	4032	40	45	91	119	193	259	707	275	262	1281	1023	610	280	69	3	19
Oth/Unk	733	1	8	5	18	32	33	96	49	51	247	179	107	67	26	2	8
FRANKLIN	3448	21	30	51	82	124	174	461	231	255	1266	875	469	240	83	1	32
White	1639	4	10	19	34	58	84	205	122	114	601	417	225	124	47	0	16
Black	1506	13	20	31	46	58	77	232	101	117	566	376	185	91	27	0	16
Oth/Unk	303	4	0	1	2	8	13	24	8	24	99	82	59	25	9	1	0
GREENE	267	1	2	4	11	20	27	64	30	21	102	48	18	20	11	0	3
White	176	1	1	4	8	16	15	44	18	12	63	33	14	15	5	0	1
Black	58	0	0	0	2	2	9	13	10	8	28	11	1	1	2	0	2
Oth/Unk	33	0	1	0	1	2	3	7	2	1	11	4	3	4	4	0	0
HAMILTON	2785	21	19	44	67	107	146	383	170	204	981	716	411	190	60	7	16
White	957	6	8	16	20	43	44	131	52	68	316	269	129	72	26	4	4
Black	1601	14	10	28	40	56	90	224	105	117	596	393	234	95	32	3	10
Oth/Unk	227	1	1	0	7	8	12	28	13	19	69	54	48	23	2	0	2
LORAIN	695	4	11	17	21	41	41	131	45	28	193	161	111	69	14	0	12
White	474	2	5	10	14	30	33	92	29	22	127	108	78	51	11	0	5
Black	124	1	5	5	3	6	2	21	9	4	36	31	15	14	2	0	4
Oth/Unk	97	1	1	2	4	5	6	18	7	2	30	22	18	4	1	0	3

TABLE 5b. RESIDENT INDUCED ABORTIONS, 2010 (PAGE 2)

County/Race	Total	Age Group															
		<15	15	16	17	18	19	15-19	20	21	20-24	25-29	30-34	35-39	40-44	45+	Unk.
LUCAS	1565	13	8	33	29	75	92	237	107	134	577	368	225	99	32	1	13
White	740	5	2	15	10	29	38	94	46	57	272	166	124	55	18	1	5
Black	651	6	6	16	13	39	46	120	52	57	236	159	82	31	10	0	7
Oth/Unk	174	2	0	2	6	7	8	23	9	20	69	43	19	13	4	0	1
MONTGOMERY	1367	6	12	25	27	55	78	197	92	93	483	341	187	113	30	2	8
White	642	2	5	14	13	26	33	91	48	44	220	162	88	56	18	1	4
Black	634	4	6	10	14	23	40	93	40	45	239	151	84	51	7	1	4
Oth/Unk	91	0	1	1	0	6	5	13	4	4	24	28	15	6	5	0	0
SUMMIT	1428	8	14	20	41	81	91	247	105	110	471	316	190	122	52	1	21
White	804	4	5	8	19	38	55	125	55	67	267	175	107	76	39	0	11
Black	526	3	7	8	21	38	33	107	46	38	181	116	64	34	11	0	10
Oth/Unk	98	1	2	4	1	5	3	15	4	5	23	25	19	12	2	1	0

TABLE 7

INDUCED ABORTIONS REPORTED IN OHIO, BY METHOD OF TERMINATION AND COUNTY OF OCCURRENCE, 2010

County of Occurrence	Method of Termination										
	TOTAL	Curette	D & Ext	D & Evac	Saline Instill	Prostag Instill	Hyster- otomy	Hyster- ectomy	Other	Non Surgical	Not Reported
Total Abortions Reported	28123	19364	143	2622	68	48	0	2	816	5862	575
Allen County	33	0	0	0	0	0	0	0	0	33	0
Cuyahoga County	10352	6664	31	1473	27	24	0	0	790	2040	490
Erie County	1	0	0	0	0	0	0	0	0	1	0
Franklin County	5391	3931	7	190	10	7	0	0	0	1260	13
Greene County	335	5	0	0	1	0	0	0	0	334	0
Hamilton County	4995	4301	25	421	10	7	0	0	4	285	7
Lucas County	2563	1747	33	179	10	4	0	0	1	572	36
Mahoning County	20	20	0	0	0	0	0	0	0	0	0
Montgomery County	2078	1644	12	285	2	2	0	2	1	134	3
Summit County	2355	1052	35	74	8	4	0	0	20	1203	26

TABLE 8

TOTAL INDUCED ABORTIONS REPORTED IN OHIO, BY
GESTATIONAL AGE, 2010

Gestational Age	Number	Percent
Total Abortions Reported	28123	100.0
Less than 9 Weeks	16283	57.9
9 - 12 Weeks	7672	27.3
13 - 19 Weeks	3397	12.1
20 Weeks	171	0.6
21 - 24	445	1.6
25 - 36 Weeks	13	0.0
Unknown	142	0.5

TABLE 9

RESIDENT INDUCED ABORTIONS IN OHIO, BY AGE OF WOMEN OBTAINING ABORTION
AND BY NUMBER OF PRIOR INDUCED ABORTIONS, 2010

Age Group	Total	Prior Induced Abortion						Unk
		0	1	2	3	4	5+	
Total Abortions	26322	12603	6678	2880	1164	456	387	2154
Under 15	167	127	8	0	1	0	0	31
15-19	4265	3068	533	78	10	5	2	569
20-24	8963	4636	2340	816	258	90	44	779
25-29	6197	2385	1802	917	385	177	127	404
30-34	3678	1213	1091	609	327	117	134	187
35-39	2079	761	613	336	132	52	63	122
40-44	698	278	225	96	37	10	13	39
45-59	37	17	9	7	1	1	1	1
Unknown	238	118	57	21	13	4	3	22

TABLE 10a

TOTAL INDUCED ABORTIONS IN OHIO WITH POST-ABORTION COMPLICATIONS, BY
TYPE OF COMPLICATION, 2010

(DATA SOURCE IS 'CONFIDENTIAL ABORTION REPORTING FORM')

Complication Type	Number of Complications	Percent of Abortions with Complications
Perforation of Uterus	0	0.00%
Cervical Laceration	11	12.22%
Hemorrhage	39	43.33%
Incomplete Abortion	4	4.44%
Hematometra	12	13.33%
Anesthetic	2	2.22%
Failed Abortion	1	1.11%
Infection	1	1.11%
Death	0	0.00%
Other	20	22.22%
Total Number of Complications*	90	Not Applicable
Total Abortions with One or More Complications	89	100.0%

TABLE 10b

TOTAL INDUCED ABORTIONS IN OHIO WITH POST-ABORTION COMPLICATIONS, BY
TYPE OF COMPLICATION, 2010

(DATA SOURCE IS 'POST-ABORTION CARE REPORT FOR COMPLICATIONS')

Complication Type	Number of Complications	Percent of Abortions with Complications
Perforation of Uterus	1	1.28%
Cervical Laceration	0	0.00%
Hemorrhage	14	17.95%
Incomplete Abortion	19	24.36%
Hematometra	16	20.51%
Anesthetic	0	0.00%
Failed Abortion	9	11.54%
Infection	18	23.08%
Death	0	0.00%
Other	1	1.28%
Total Number of Complications*	78	Not Applicable
Total Abortions with One or More Complications	67	100.0%

TABLE 11

TOTAL INDUCED ABORTIONS IN OHIO WITH POST-ABORTION COMPLICATIONS, BY
TYPE OF COMPLICATION AND GESTATION PERIOD, 2010

(DATA SOURCE IS POST-ABORTION CARE REPORT FOR COMPLICATIONS')

Complication Type	Total	Gestation Period				Unk
		< 9 Wks	9-12 Wks	13-19 Wks	20+ Wks	
(Number of Complications)						
Perforation of Uterus	1	0	1	0	0	0
Cervical Laceration	0	0	0	0	0	0
Hemorrhage	14	7	4	3	0	0
Incomplete Abortion	19	13	3	3	0	0
Hematometra	16	5	8	3	0	0
Anesthetic	0	0	0	0	0	0
Failed Abortion	9	6	2	1	0	0
Infection	18	4	8	5	1	0
Death	0	0	0	0	0	0
Other/Unreported	1	1	0	0	0	0
Total Number of Complications*	78	36	26	15	1	0
Total Abortions with One or More Complications	67	33	23	5	1	0

NOTE: An abortion may have more than one reported complication. Complications reported in this table may or may not also be reported in Table 10b.

TABLE 12

RESIDENT INDUCED ABORTIONS BY ZIP CODE OF PATIENT, OHIO, 2010

Zip Code	Total Zip Code	Total Zip Code	Total Zip Code	Total Zip Code	Total		
43003	1	43081	108	43203	68	43223	61
43004	54	43082	19	43204	104	43224	125
43006	2	43085	26	43205	56	43226	3
43009	1	43100	1	43206	93	43227	96
43011	7	43102	6	43207	127	43228	158
43013	3	43103	12	43208	1	43229	209
43014	6	43105	11	43209	60	43230	123
43015	54	43106	3	43210	11	43231	69
43016	58	43107	1	43211	86	43232	236
43017	55	43109	1	43212	42	43233	1
43018	1	43110	85	43213	152	43235	94
43019	4	43112	4	43214	53	43236	1
43021	7	43113	21	43215	50	43239	1
43022	5	43114	1	43217	8	43240	5
43023	14	43116	2	43219	118	43242	1
43025	4	43117	1	43220	44	43258	1
43026	76	43119	60	43221	40	43268	1
43027	1	43123	101	43222	11	43281	1
43028	7	43125	18	43223	61	43302	56
43029	2	43128	2	43224	125	43307	1
43030	2	43130	52	43226	3	43311	22
43031	12	43135	4	43227	96	43314	4
43035	35	43136	3	43228	158	43315	16
43040	41	43137	2	43229	209	43316	6
43044	6	43138	18	43230	123	43318	1
43046	4	43140	27	43231	69	43319	2
43047	1	43142	1	43232	236	43320	1
43050	37	43143	10	43233	1	43322	1
43052	1	43144	2	43235	94	43323	2
43054	24	43145	2	43236	1	43324	2
43055	84	43146	9	43239	1	43325	1
43056	24	43147	60	43240	5	43326	9
43061	2	43149	4	43242	1	43331	2
43062	36	43150	1	43258	1	43332	2
43063	1	43151	1	43268	1	43334	4
43064	11	43152	1	43281	1	43338	11
43065	32	43153	2	43302	56	43342	4
43066	2	43154	4	43307	1	43343	1
43068	181	43155	2	43311	22	43344	8
43071	2	43160	31	43314	4	43345	1
43072	6	43162	5	43315	16	43348	1
43073	1	43164	1	43316	6	43351	7
43074	11	43173	2	43318	1	43356	2
43076	17	43200	2	43319	2	43357	7
43078	30	43201	134	43320	1	43358	1
43080	4	43202	72	43322	1	43359	1

TABLE 12. RESIDENT INDUCED ABORTIONS BY ZIP CODE OF PATIENT, OHIO, 2010 (PAGE 2)

Zip Code	Total	Zip Code	Total	Zip Code	Total	Zip Code	Total
43380	1	43528	27	43723	4	43919	1
43402	92	43532	4	43724	4	43920	20
43403	9	43533	1	43725	30	43933	2
43405	1	43534	2	43727	2	43935	1
43408	1	43535	1	43728	2	43945	1
43410	15	43537	36	43730	6	43950	1
43412	3	43538	1	43731	3	43952	1
43413	1	43540	2	43732	1	43953	1
43416	3	43542	3	43734	1	43963	1
43417	1	43543	6	43735	1	43964	1
43420	59	43545	15	43740	1	43968	3
43425	1	43551	52	43746	2	43971	1
43426	1	43554	4	43747	1	43973	1
43430	10	43557	4	43748	2	43977	1
43431	9	43558	11	43749	2	43988	2
43432	2	43560	45	43755	4	44001	40
43435	2	43565	1	43756	3	44003	9
43437	2	43566	3	43758	3	44004	71
43440	5	43567	10	43762	6	44005	2
43442	2	43570	2	43764	5	44009	2
43445	2	43571	9	43766	1	44010	2
43447	5	43572	2	43768	2	44011	43
43449	8	43584	1	43771	2	44012	28
43450	4	43600	1	43772	1	44013	1
43451	2	43601	1	43777	4	44017	35
43452	17	43602	2	43778	1	44020	2
43456	1	43604	79	43780	3	44021	9
43457	1	43605	130	43783	3	44022	22
43460	12	43606	107	43787	1	44023	29
43462	1	43607	142	43793	2	44024	24
43464	2	43608	97	43804	1	44025	1
43465	7	43609	109	43806	2	44026	11
43466	3	43610	25	43810	1	44028	18
43468	1	43611	65	43812	13	44029	1
43469	1	43612	101	43817	1	44030	20
43500	1	43613	107	43821	2	44032	3
43502	3	43614	106	43822	1	44033	2
43504	2	43615	179	43830	5	44035	182
43506	18	43616	34	43832	8	44036	1
43512	28	43617	15	43837	1	44038	1
43513	1	43618	1	43840	1	44039	44
43515	8	43619	15	43844	1	44040	6
43516	6	43620	37	43845	3	44041	33
43517	1	43623	43	43847	2	44044	18
43518	5	43628	1	43867	1	44045	1
43521	1	43635	1	43901	1	44046	4
43522	5	43668	1	43903	1	44047	9
43524	2	43701	66	43906	2	44048	7
43525	2	43713	11	43907	4	44049	1
43526	4	43718	1	43915	1	44050	4

TABLE 12. RESIDENT INDUCED ABORTIONS BY ZIP CODE OF PATIENT, OHIO, 2010 (PAGE 3)

Zip Code	Total	Zip Code	Total	Zip Code	Total	Zip Code	Total
44051	1	44115	112	44205	3	44303	27
44052	133	44116	33	44206	1	44304	28
44053	36	44117	77	44207	2	44305	92
44054	39	44118	218	44208	1	44306	104
44055	57	44119	75	44212	60	44307	54
44056	16	44120	362	44213	2	44308	4
44057	27	44121	208	44215	5	44309	2
44059	2	44122	109	44216	13	44310	70
44060	119	44123	129	44217	6	44311	42
44062	4	44124	80	44218	1	44312	59
44063	2	44125	143	44220	1	44313	69
44064	3	44126	24	44221	77	44314	62
44065	5	44127	52	44223	22	44316	1
44067	43	44128	304	44224	76	44317	4
44070	61	44129	97	44230	11	44319	31
44072	12	44130	174	44231	17	44320	93
44074	24	44131	23	44233	10	44321	25
44075	2	44132	120	44234	8	44323	1
44076	9	44133	70	44236	13	44325	2
44077	124	44134	101	44240	148	44328	1
44080	2	44135	123	44241	54	44330	1
44081	13	44136	37	44242	2	44333	19
44082	1	44137	224	44243	10	44346	1
44084	8	44138	37	44244	1	44401	2
44085	5	44139	50	44246	1	44402	4
44086	3	44140	21	44249	1	44403	5
44087	45	44141	12	44250	4	44404	3
44089	24	44142	54	44251	1	44405	16
44090	26	44143	83	44253	3	44406	37
44092	50	44144	73	44254	6	44408	10
44093	5	44145	55	44255	15	44410	33
44094	89	44146	194	44256	96	44411	2
44095	75	44147	32	44260	18	44412	5
44098	1	44148	2	44262	6	44413	10
44099	1	44149	33	44264	5	44416	1
44100	7	44152	2	44266	63	44420	34
44101	4	44153	1	44270	11	44423	1
44102	268	44157	2	44272	3	44425	27
44103	168	44160	2	44273	12	44427	3
44104	320	44164	1	44274	1	44428	4
44105	453	44165	1	44275	3	44429	3
44106	174	44172	1	44278	24	44430	3
44107	218	44185	2	44280	8	44431	5
44108	242	44196	1	44281	33	44432	14
44109	216	44197	1	44284	2	44434	1
44110	217	44199	1	44286	10	44436	3
44111	165	44201	9	44287	11	44437	7
44112	211	44202	28	44288	10	44438	8
44113	95	44203	81	44301	61	44440	9
44114	22	44204	2	44302	24	44441	3

TABLE 12. RESIDENT INDUCED ABORTIONS BY ZIP CODE OF PATIENT, OHIO, 2010 (PAGE 4)

Zip Code	Total	Zip Code	Total	Zip Code	Total	Zip Code	Total
44442	4	44613	2	44705	54	44870	97
44443	2	44614	25	44706	44	44875	10
44444	15	44615	13	44707	40	44878	2
44445	4	44618	3	44708	52	44880	1
44446	37	44621	10	44709	58	44881	1
44450	3	44622	29	44710	28	44882	2
44451	6	44624	3	44711	2	44883	32
44452	5	44625	2	44714	17	44889	6
44455	1	44626	2	44718	18	44890	12
44460	27	44628	1	44720	50	44902	18
44463	1	44630	2	44721	12	44903	42
44470	2	44632	10	44730	6	44904	16
44471	21	44634	3	44760	1	44905	19
44472	1	44637	6	44802	1	44906	23
44473	5	44638	1	44804	2	44907	20
44481	9	44640	2	44805	33	44919	1
44483	56	44641	31	44806	1	44925	1
44484	38	44643	5	44807	2	45002	16
44485	66	44644	8	44810	5	45003	2
44486	1	44645	4	44811	9	45004	2
44487	2	44646	96	44813	4	45005	49
44489	1	44647	36	44814	4	45011	140
44490	2	44651	2	44816	1	45012	1
44491	4	44653	2	44817	2	45013	90
44502	33	44654	8	44818	1	45014	135
44503	3	44656	4	44820	14	45015	26
44504	14	44657	12	44822	1	45018	1
44505	46	44662	18	44824	2	45019	1
44506	10	44663	28	44826	1	45020	1
44507	20	44666	3	44827	11	45030	23
44508	1	44667	16	44830	21	45033	1
44509	44	44669	1	44832	1	45034	2
44510	11	44672	7	44833	10	45036	49
44511	46	44675	1	44836	1	45039	21
44512	71	44676	6	44837	1	45040	73
44514	32	44677	1	44838	1	45041	1
44515	69	44678	1	44839	20	45042	49
44517	1	44680	6	44841	2	45044	92
44571	1	44681	4	44842	8	45047	1
44572	1	44682	2	44843	1	45048	1
44575	4	44683	10	44846	8	45049	2
44585	1	44685	36	44847	2	45050	26
44601	58	44688	4	44851	3	45052	7
44603	2	44689	1	44855	1	45053	2
44606	6	44691	44	44857	28	45054	2
44607	2	44699	1	44859	3	45056	39
44608	1	44701	1	44864	2	45064	6
44609	7	44702	1	44865	4	45065	9
44611	2	44703	33	44866	2	45066	28
44612	1	44704	20	44867	2	45067	19

TABLE 12. RESIDENT INDUCED ABORTIONS BY ZIP CODE OF PATIENT, OHIO, 2010 (PAGE 5)

Zip Code	Total	Zip Code	Total	Zip Code	Total	Zip Code	Total
45068	11	45211	147	45311	2	45402	48
45069	72	45212	66	45312	4	45403	35
45071	1	45213	50	45314	3	45404	36
45085	1	45214	68	45315	7	45405	80
45101	1	45215	105	45317	1	45406	104
45102	25	45216	32	45318	5	45407	1
45103	65	45217	27	45320	18	45408	14
45106	9	45218	5	45322	35	45409	19
45107	6	45219	74	45323	10	45410	36
45109	1	45220	62	45324	95	45411	1
45111	1	45223	83	45325	3	45414	54
45113	4	45224	87	45327	12	45415	35
45118	5	45225	76	45328	3	45416	17
45120	1	45226	18	45329	1	45417	99
45121	8	45227	58	45331	12	45418	9
45122	20	45229	86	45333	2	45419	25
45123	8	45230	54	45334	1	45420	50
45130	5	45231	159	45335	5	45422	1
45133	24	45232	66	45337	4	45423	2
45135	4	45233	19	45338	1	45424	111
45140	71	45234	4	45339	1	45426	91
45142	8	45236	66	45340	1	45427	10
45145	1	45237	91	45341	6	45429	35
45146	1	45238	139	45342	77	45430	8
45147	1	45239	99	45344	29	45431	44
45148	3	45240	151	45345	12	45432	21
45150	43	45241	41	45346	4	45433	2
45152	11	45242	38	45347	3	45434	20
45153	4	45243	17	45354	1	45439	25
45154	10	45244	37	45356	42	45440	40
45157	11	45245	31	45358	2	45449	54
45158	1	45246	49	45359	1	45458	53
45159	3	45247	43	45363	1	45459	46
45162	4	45248	30	45365	32	45475	1
45167	2	45249	27	45368	9	45485	1
45169	4	45251	62	45369	1	45502	22
45171	4	45252	6	45370	1	45503	57
45172	1	45253	1	45371	18	45504	26
45176	6	45255	26	45373	39	45505	44
45177	22	45257	1	45377	24	45506	28
45201	3	45265	1	45378	3	45540	1
45202	79	45269	1	45380	8	45601	66
45203	18	45275	2	45381	3	45605	1
45204	30	45277	1	45382	1	45607	2
45205	97	45301	1	45383	6	45612	4
45206	55	45302	2	45384	4	45613	3
45207	46	45304	3	45385	55	45614	1
45208	27	45305	20	45387	6	45616	2
45209	33	45308	2	45400	1	45621	1
45210	1	45309	15	45401	3	45628	7

TABLE 12. RESIDENT INDUCED ABORTIONS BY ZIP CODE OF PATIENT, OHIO, 2010 (PAGE 6)

Zip Code	Total	Zip Code	Total	Zip Code	Total	Zip Code	Total
45631	5	45669	1	45714	7	45779	1
45634	1	45672	1	45715	1	45780	5
45638	5	45679	1	45716	2	45783	1
45640	11	45680	6	45719	1	45786	2
45641	1	45681	3	45723	1	45801	40
45643	1	45682	2	45724	2	45802	1
45644	4	45690	16	45729	1	45804	35
45646	1	45692	8	45732	3	45805	37
45647	1	45693	9	45735	3	45806	9
45648	3	45694	7	45743	1	45807	14
45651	1	45695	1	45744	1	45883	1
45652	1	45697	3	45750	11	45885	14
45653	1	45701	74	45753	1	45887	5
45656	3	45704	1	45760	1	45889	1
45657	2	45707	2	45761	2	45891	3
45659	2	45710	7	45764	12	45895	11
45660	6	45713	1	45766	1	45896	1
45661	2	45714	7	45769	7	99999	271
45662	27	45713	1	45770	1		
45663	5	45714	7	45775	1		

Confidential Abortion Report

Ohio Department of Health
(Required pursuant to O.A.C. 3701-47-03)

1. Facility name:	For State Use Only
2. Address: Zip code: <input style="width: 40px;" type="text"/>	

GENERAL INFORMATION

3. Zip code of address of the woman: <input style="width: 100%;" type="text"/>	Ohio County of Residence (specify):	Non-Ohio State of Residence (specify):
4. Woman's identification number: <input style="width: 100%;" type="text"/>	5. Age of woman: <input style="width: 40px;" type="text"/>	6. Education: Specify highest number of years completed <input style="width: 40px;" type="text"/>
7. Marital status: <input type="checkbox"/> Never married <input type="checkbox"/> Divorced <input type="checkbox"/> Married <input type="checkbox"/> Widowed <input type="checkbox"/> Separated <input type="checkbox"/> Unknown	8A. Race or ethnic group: <input type="checkbox"/> White <input type="checkbox"/> Asian/Pacific Islander <input type="checkbox"/> Black <input type="checkbox"/> Other /Unknown (specify) _____ <input type="checkbox"/> American Indian	8B. Is woman Hispanic? <input type="checkbox"/> Yes <input type="checkbox"/> No

MEDICAL HISTORY

9. Number of living children: <input style="width: 40px;" type="text"/>	10. Date of last live birth: <input style="width: 40px;" type="text"/> m <input style="width: 40px;" type="text"/> d <input style="width: 40px;" type="text"/> y <input style="width: 40px;" type="text"/>
11. Number of prior abortions: Spontaneous <input style="width: 40px;" type="text"/> Induced <input style="width: 40px;" type="text"/>	12. Date of last Induced abortion: <input style="width: 40px;" type="text"/> m <input style="width: 40px;" type="text"/> d <input style="width: 40px;" type="text"/> y <input style="width: 40px;" type="text"/>
13. Number of previous pregnancies: <input style="width: 40px;" type="text"/>	14. Contraceptive History: Was the woman practicing contraception at the time of conception? <input type="checkbox"/> Yes <input type="checkbox"/> No. <input type="checkbox"/> Unknown
15. Method. If yes to number 14, what was the method used?: <input type="checkbox"/> Pill, Norplant, Depo-Provera <input type="checkbox"/> Surgical <input type="checkbox"/> Condom, Jelly, Cervical Cap, Sponge, Insert <input type="checkbox"/> Other (specify) _____ <input type="checkbox"/> Rhythm, Coitus Interruptus	16. First day of last menstrual period: <input style="width: 40px;" type="text"/> m <input style="width: 40px;" type="text"/> d <input style="width: 40px;" type="text"/> y <input style="width: 40px;" type="text"/>
	17. Rh type of woman: <input type="checkbox"/> Negative <input type="checkbox"/> Positive

MEDICAL PROCEDURE

18. Date of Termination: <input style="width: 40px;" type="text"/> m <input style="width: 40px;" type="text"/> d <input style="width: 40px;" type="text"/> y <input style="width: 40px;" type="text"/>	19A. Clinical Estimate of Gestation in weeks: <input style="width: 40px;" type="text"/>	19B. If 19A is 14 or greater, were discharge instructions given as per O.A.C. 3701-47-02? <input type="checkbox"/> YES <input type="checkbox"/> NO
20. Method of Termination: <input type="checkbox"/> Suction Curettage <input type="checkbox"/> Sharp Curettage <input type="checkbox"/> Dilation & Extraction <input type="checkbox"/> Dilation & Evacuation <input type="checkbox"/> Saline/Urea Installation <input type="checkbox"/> Prostaglandin Installation <input type="checkbox"/> Hysterotomy <input type="checkbox"/> Hysterectomy <input type="checkbox"/> Other (specify) _____ <input type="checkbox"/> Medical (NonSurgical) Specify Medication(s) _____		
21. Medical condition of the woman at the time of the abortion: <input type="checkbox"/> Good <input type="checkbox"/> Fair <input type="checkbox"/> Other (specify) _____	22. Type of procedure done immediately after the abortion: <input type="checkbox"/> Sterilization <input type="checkbox"/> None <input type="checkbox"/> Other (specify) _____	
23. Post Abortion Complications (Indicate all): <input type="checkbox"/> None <input type="checkbox"/> Hemorrhage <input type="checkbox"/> Perforation of uterus <input type="checkbox"/> Cervical laceration <input type="checkbox"/> Infection <input type="checkbox"/> Anesthetic <input type="checkbox"/> Failed Abortion <input type="checkbox"/> Incomplete Abortio <input type="checkbox"/> Hematometra <input type="checkbox"/> Death <input type="checkbox"/> Other (specify) _____	24. Type of family planning recommended: <input type="checkbox"/> Pill, Norplant, Depo-Provera <input type="checkbox"/> Condom, Jelly, Cervical Cap, Sponge, Insert <input type="checkbox"/> Rhythm, Coitus Interruptus <input type="checkbox"/> Surgical <input type="checkbox"/> Other (specify) _____	
25. Type of Counseling given: <input type="checkbox"/> Psychological <input type="checkbox"/> Social Service <input type="checkbox"/> Pastoral <input type="checkbox"/> Medical <input type="checkbox"/> Other (specify) _____ <input type="checkbox"/> None		
26. Physician's name (Type or print):	M.D. D.O.	Physician's Signature: _____ Date: _____

**Send completed forms to:
OHIO DEPARTMENT OF HEALTH,
CONFIDENTIAL REPORTS A,
P.O. BOX 118, COLUMBUS, OHIO 43216**

Post Abortion Care Report For Complications

Ohio Department of Health

(Required Pursuant to O.A.C. 3701-47-03)

To be completed by the physician providing post-abortion care

State Use Only

1. Facility where post-abortion care was provided:

2. Street or Post Number

City

State

Zip

3. Date of Abortion: Month Day Year

___/___/___

4. Weeks of Gestation:

5A. Facility where Abortion was performed:

5B Address of Facility:

Street or Post Number

City

State

Zip

6. Date Post Abortion Care Began: Month Day Year

___/___/___

7. Patient Number:

___/___/___/___/___/___/___/___/___/___/___/___/___/___/___/___

8. Complication(s) (Please check all that apply):

Hemorrhage

Failure of Amniotic Fluid Ex

Infection

Anesthetic

RH Incompatibility

Incomplete Abortion

Hematometra

Cervical Laceration

Death

Perforation of Uterus

Failed Abortion

Other (Specify) _____

9. Duration of treatment: (Indicate number of hours or days)

_____ Hours _____ Days

10. Remarks:

11A. Physician's name providing care
(Type or print)

11B. Physicians Signature:

M.D.

D.O.

Date:

Send Completed Forms to: Ohio Department of Health
Confidential Reports A
P O Box 118
Columbus OH 43216

HEA 1806
Rev 4/96